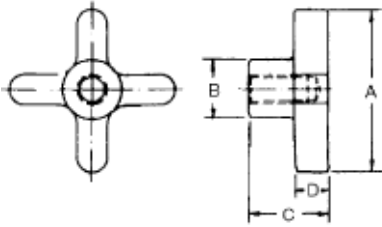


## Hand Knobs



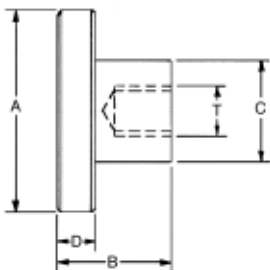
- Available in cast iron with zinc plating or cast aluminum
- Sizes 200 through 621 have 4 prongs
- Sizes 722 through 829 have 5 prongs
- Blind hole (tapped and reamed hole are not through)

Cast Iron PART #	Aluminum PART #	A	B	C	D	Ream R	Tapped T
HK-307	HK-307A	1-1/2	5/8	7/8	3/8		5/16-18
HK-308	HK-308A	1-1/2	5/8	7/8	3/8	.3115	
HK-309	HK-309A	1-1/2	5/8	7/8	3/8	Blank	
HK-410	HK-410A	2	3/4	1	3/8		3/8-16
HK-411	HK-411A	2	3/4	1	3/8	.3115	
HK-412	HK-412A	2	3/4	1	3/8	.374	
HK-413	HK-413A	2	3/4	1	3/8	Blank	
HK-616	HK-616A	2-1/2	1-1/8	1-1/2	1/2		1/2-13
HK-617	HK-617A	2-1/2	1-1/8	1-1/2	1/2	.499	
HK-618	HK-618A	2-1/2	1-1/8	1-1/2	1/2		5/8-11
HK-619	HK-619A	2-1/2	1-1/8	1-1/2	1/2	.624	
HK-620	HK-620A	2-1/2	1-1/8	1-1/2	1/2	.374	
HK-621	HK-621A	2-1/2	1-1/8	1-1/2	1/2	Blank	
-	HK-826A	3	1-1/4	1-3/4	1/2		3/4-10
-	HK-827A	3	1-1/2	1-3/4	1/2	.624	
-	HK-828A	3	1-1/2	1-3/4	1/2	.749	
-	HK-829A	3	1-1/2	1-3/4	1/2	Blank	

## Hand Knobs



- Cast iron hand knob with zinc plate finish
- Straight knurl design
- Available as a "blank" casting, blind thread, or tap through design



PART #	Design	Thread	Thread Depth	A	B	C	D
SK-150	Blank Casting	-	-	1-1/2	7/8	5/8	3/8
SK-151	Blind Thread	1/4-20	7/16	1-1/2	7/8	5/8	3/8
SK-152	Tap Through	1/4-20	Tap Through	1-1/2	7/8	5/8	3/8
SK-153	Blind Thread	5/16-18	7/16	1-1/2	7/8	5/8	3/8
SK-154	Tap Through	5/16-18	Tap Through	1-1/2	7/8	5/8	3/8
SK-200	Blank Casting	-	-	2	7/8	3/4	3/8
SK-201	Blind Thread	5/16-18	9/16	2	7/8	3/4	3/8
SK-202	Tap Through	5/16-18	Tap Through	2	7/8	3/4	3/8
SK-203	Blind Thread	3/8-16	9/16	2	7/8	3/4	3/8
SK-204	Tap Through	3/8-16	Tap Through	2	7/8	3/4	3/8
SK-250	Blank Casting	-	-	2-1/2	1-1/2	1-1/8	1/2
SK-251	Blind Thread	1/2-13	3/4	2-1/2	1-1/2	1-1/8	1/2
SK-252	Tap Through	1/2-13	Tap Through	2-1/2	1-1/2	1-1/8	1/2
SK-253	Blind Thread	5/8-11	3/4	2-1/2	1-1/2	1-1/8	1/2
SK-254	Tap Through	5/8-11	Tap Through	2-1/2	1-1/2	1-1/8	1/2